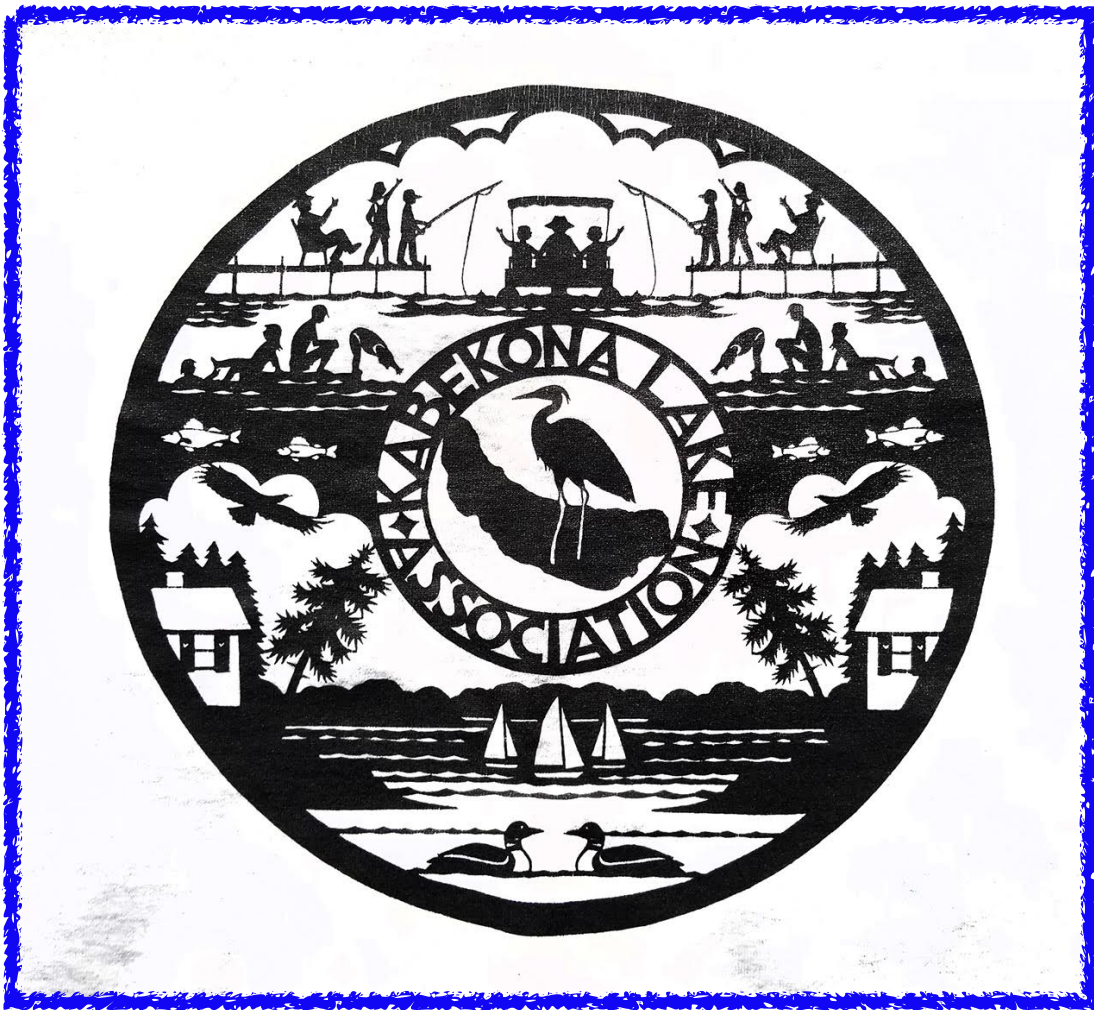


# KABEKONA LAKE ASSOCIATION

## Annual Report

**2022**



*Annual Meeting-Saturday, August 6th Laporte School*

# **Table of Contents**

KLA Annual Meeting Agenda.....	3
KLA President’s 2022 Report.....	4
Minutes of the 2021 Annual Meeting.....	5
Treasurer’s 2021 Report.....	8
2022 Committee/Coordinator Reports:	
Membership.....	9
Lake Management.....	10
HC COLA.....	11
Septic Systems.....	12
Social Groups.....	13
Archives.....	14
KLA Website.....	15
KLF President’s 2022 Report.....	16
KLA New Board 2023 Nominations.....	17
KLA and KLF Bylaws.....	17

# **2022 KABEKONA LAKE ASSOCIATION ANNUAL MEETING AGENDA**

9:30 a.m. – Registration and refreshments

10:00 a.m. – Kabekona Lake Association Business Meeting

WELCOME and INTRODUCTION of the 2022 BOARD MEMBERS

Officers:	Maddy Lawrence
President – Ingrid Bey	Mike Dudley
President Elect – Nick Rogge	Sarah Carlson
Treasurer – Lee Weinmann	Paul Uring
Secretary – Stef Westphal	Tony Fiacchino

PRESENTATION – Special guest Spencer Rettler, Minnesota Loon Restoration Project

APPROVAL of MINUTES from the 2021 ANNUAL MEETING

2021 TREASURER’S REPORT – Lee Weinmann

2022 COMMITTEE REPORTS-

Membership – Catherine Holmgren  
Lake Management – Sam Holmgren  
HC COLA/Water Quality – Rolf Smeby  
Septic Systems Rebate Program – Kathy Brown and Heidi Soneson  
Web Manager – Paul Andress  
Archivist – Stef Westphal  
Kabekona Lake Foundation (KLF) – Dan Rasmus, President

INTRODUCTION of NEW 2023 BOARD MEMBER – Sue Schiess

ELECTION of NEW 2023 BOARD MEMBER

KLA MEMBERS: QUESTIONS/COMMENTS, OLD or NEW BUSINESS  
ADJOURN

## **KLA President's 2022 Report**

Dear KLA Members,

Kabekona! Peace at the end of the trail. But the trail is the thing, not the end of the trail. Travel too fast and you will miss all you are traveling for. Wonder. Wander. Repeat.

We celebrate this beautiful lake and the wonderful people. The Kabekona Lake Association has so much to be thankful for. As far as we know, the lake is free of Aquatic Invasive Species (AIS) and the water quality is excellent. The shoreline and wetlands are healthy. We have strong partners in the Hubbard County Coalition of Lake Associations (HC COLA) and the Minnesota Aquatic Invasive Species Research Center (MAISRC), with similar goals of keeping all Minnesota lakes healthy. We have dedicated people serving on the KLA and KLF boards. There are many KLA members taking on new roles that were previously filled by hard-working and dedicated people for many years. We have introduced an updated website ([kabekonalake.org](http://kabekonalake.org)). Thank you, one and all. I am grateful.

Please continue to safeguard Kabekona Lake and the natural environment. Working together, we are strong and resilient.

Skip a stone. Take a hike. Sit a spell. Listen. Daydream. Just breathe. This is lake living.

In appreciation of so many, for so much.

Ingrid Bey, KLA President

# **KLA ANNUAL MEETING MINUTES AUGUST 7, 2021**

The Annual Meeting of the Kabekona Lake Association was called to order at 10:12am by President Mike Dudley.

Board Members present: Mike Dudley, Ingrid Bey, Lee Weinmann, Stef Westphal, Paul Ulring, Gene Moffatt, Sarah Carlson

Board Members absent: Gary Roberts, Maddy Lawrence, Kris Bateman

Committee/Group/Project/Coordinators present: Sue Schiess, Rolf Smeby, Rosy Albers, Mary Moffatt, Luther Nervig

## **WELCOME AND PRESIDENT'S REPORT**

The 85 Kabekona Lake Association members present at the 2021 KLA Annual Meeting were welcomed by President Mike Dudley. Volunteers who worked on lake association business were thanked. Mike outlined a number of the challenges that face the KLA. Volunteering was encouraged.

## **FINANCIAL REPORT**

Lee Weinmann, KLA Treasurer presented the KLA Financial Report. The KLA treasury is almost entirely funded by membership dues. A generous donation was made by Eric Hermanson from sales of his Kabekona mugs. The treasury largely funds KLA water quality, social and communication needs.

## **COMMITTEE/GROUP/COORDINATOR/PROJECT REPORTS**

### **MEMBERSHIP**

Rosy Albers presented the Membership Report. 344 members currently belong to the KLA. The KLA has 25 new members. They were individually listed and welcomed.

### **LAKE MANAGEMENT**

The Lake Management Committee was formed to coordinate all the actions associated with protecting and sustaining the water quality of Kabekona Lake. Responsibilities include aquatic invasive species protection strategies and inspection, lake monitoring, public access monitoring, fisheries, testing and reporting, watershed awareness and protection.

A number of lake projects were discussed. A Water Quality Report was also part of the Annual Report packet. An Aquatic Vegetation Survey by RMB Labs, Detroit Lakes was completed and emailed to KLA members in 2021. This survey should be repeated every 3-5 years. No aquatic invasive species were found. The Loon Restoration Project is ongoing. The causes of very low lake levels were looked into.

## **HC/COLA (Hubbard County Coalition of Lake Associations)**

KLA is one of 30 Hubbard County Lake Associations that belong to HC COLA. Our KLA has the largest membership of the various lake associations in HC COLA. The main objective of this association is to stop the spread of AIS (Aquatic Invasive Species). It also promotes lake quality. The ongoing projects include: testing water quality in various ways, preventing AIS, collecting lead tackle, monitoring loons and Shoreland Advisors (a free program to help shore owners to enhance their property).

## **ARCHIVES**

The KLA/KLF Archives are located in Laporte School. They date back to the beginnings of lake settlement on Kabekona and are open to visitors.

## **SEPTIC**

Mary Moffatt coordinates the septic rebate program for the lake. Septic systems should be pumped out every 3 years. KLA Members and non-members can request a rebate after pumping.

## **KABEKONA WATERSHED LAND ACQUISITION PROJECT**

Luther Nervig reported that the KLF is joining up with Northern Water Land Trust in Walker to preserve and protect Kabekona. This land acquisition goal has been formulated specifically to protect the 655 acre forest that Potlach has recently sold. The joint project is the 5th acquisition of land by the KLF. This land purchase will help protect the water quality of Kabekona Lake and its watershed. (See map attached.)

## **ELECTION OF NEW BOARD MEMBERS**

Tony Fiacchino and Nick Rogge volunteered to fill 2 vacant positions on the KLA Board. They were unanimously elected.

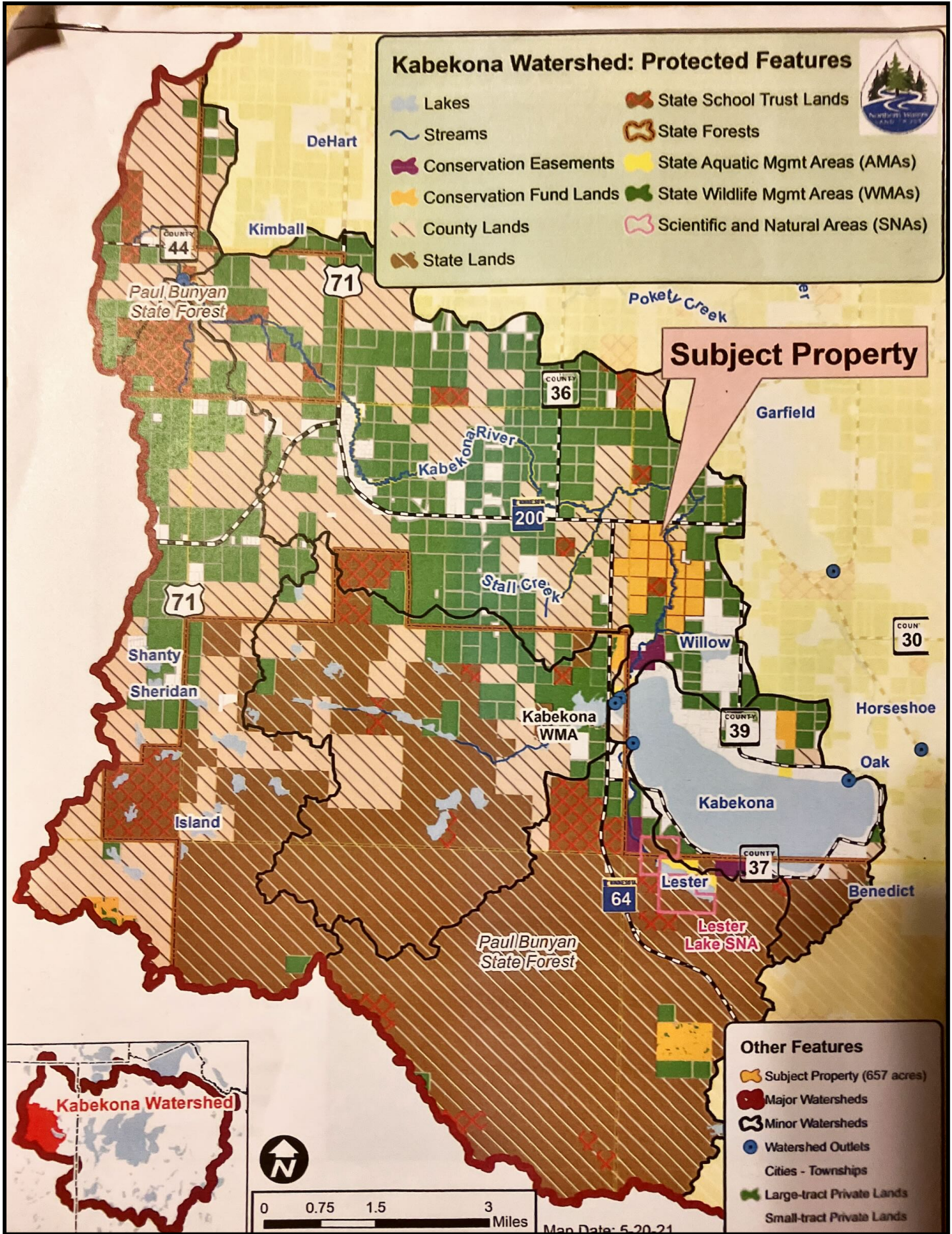
## **KABEKONA LAKE FOUNDATION (KLF)**

Sue Schiess, KLF President presented the KLF report. The goals and activities of the KLF were listed. The financial statement of the KLF was discussed. Ways to donate to the KLF were outlined. Outgoing members (Don Evans, Sue Schiess and Sam Holmgren). were thanked and new members (Katherine Holmgren, Darlene Hibbs and Pete Fullerton) were introduced.

## **QUESTIONS/COMMENTS FROM MEMBERSHIP**

There is concern about Spotted Knapweed plants growing along County Road 37. It is an invasive plant that spreads along the roadside and down into the ditch. It will take over and kill all the other native plants. The flowers are purple and easy to pull just now. It should be removed before it goes to seed..

*Motion to adjourn was made by Sue Schiess. Dave Loch seconded. The motion was unanimously approved. The Annual Meeting was adjourned at 11:14.*



**Kabekona Lake Association**  
**Statement of Income and Expenses**  
**January 1 - December 31, 2021**

**Beginning Balances (January 1):**

Checking	\$ 12,528.12
Savings	<u>\$ 1,125.51</u>
<b>Total</b>	<b>\$ 13,653.63</b>

**Income:**

Interest	\$ 1.15
Membership	\$ 4,621.00
Trees - Sales	\$ 833.00
KLA Donation (Mug Sales)	\$ 715.00
NW MN Foundation (Aquatic Vegetation Survey)	\$ 1,518.00
Grant (Kabekona Lake Fund)	<u>\$ 11,890.51</u>
	<b>\$ 19,578.66</b>

**Expenses:**

Printing (Newsletter and Currents)	\$ 209.11
Postage	\$ 741.37
P.O. Box - 1 year	\$ 84.00
Portable Restroom at Public Access	\$ 617.25
Swedish Dish Cloths	\$ 268.00
I-LIDS Upgrade (KLF Grant)	\$ 400.78
I-LIDS Monitoring- 2021 (KLF Grant)	\$ 1,915.95
Veliger Testing Net (KLF Grant)	\$ 539.00
RMB Labs - Aquatic Vegetation Survey (KLF Grant)	\$ 3,034.78
Trees - Purchase	\$ 833.00
COLA Water Testing	\$ 437.00
COLA Membership Dues	\$ 600.00
KLA Operational Expense (Zoom Account)	\$ 161.18
MLR Advocates Membership Dues	\$ 300.00
KLA Sponsorship (Cass County Museum)	\$ 150.00
KLA Sponsored Honorariums	\$ 0.00
KLF (Redirect NW MN Grant for Aquatic Veg. Survey)	\$ 1,518.00
KLA Septic Assistance Program	\$ 6,000.00
Annual Meeting (Food and Beverage)	<u>\$ 121.54</u>
	<b>\$ 17,930.96</b>

**Income less Expenses:** \$ 1,647.70

**Ending Balances (December 31):**

Checking	\$ 14,174.67
Savings	<u>\$ 1,126.66</u>
<b>Total</b>	<b>\$ 15,301.33</b>

**Net Gain (Loss)** \$ 1,647.70



# **2022 COMMITTEE/COORDINATOR REPORTS**

## **MEMBERSHIP**

The membership committee's duties are to collect KLA dues, maintain an up-to-date membership list & directory, coordinate all mailings, recruit and welcome new members, and manage the KLA email communications.

Current paid memberships total 186. This is ahead of the amount of paid memberships we typically have at this point in the season as many members normally renew their memberships at the annual meeting. One of the contributing factors is that we have made it possible to pay dues online by credit card this year through our newly redesigned website making it even more convenient to pay. If you haven't already paid your dues and would like to do so online, please go to [www.kabekonalake.org/membership-dues](http://www.kabekonalake.org/membership-dues).

Eight (8) new members have joined since the beginning of this year. Please welcome:

**Karson & Kristin Barstad**  
**Scott & Jennifer Belz**  
**Chad & Holly Gross**  
**Luke & Gretchen Hambrecht**  
**Brian & Elizabeth Klammer**  
**Steve & Linda Pouliot**  
**John & Shannon Rohm**  
**Karen Smith**

The spring KLA newsletter was produced & edited by Stef Westphal. In line with the KLA philosophy to *Go Green* where we can, it was emailed to those with a current email address on file and only mailed via USPS to those who did not. Those who did not have an email on file were notified that they would no longer receive the KLA newsletter via USPS and were asked to provide their email address for future newsletter editions and communications via email. Future editions of the KLA newsletter will be sent vial email only. If you do not have a current email on file and have not been receiving emails from KLA and would like to, please send an email to [kla56461@gmail.com](mailto:kla56461@gmail.com) with your name and email address for future distribution.

If you find an error in your directory information, please email Catherine Holmgren at [kla56461@gmail.com](mailto:kla56461@gmail.com). A list of changes will be sent out sometime this winter. Updated hard copy directories will not be printed this year. If you want an extra 2019 directory (the last printed directory), they are \$5.00. We also have the *Kabekona Chronicles* available for \$10.00.

We encourage you to invite your neighbors to join KLA, if they are not already members. Please let me know if someone is interested in membership. There are many benefits to membership and our lake association is one of the strongest in the area

Submitted by Catherine Holmgren, Chair

## **LAKE MANAGEMENT TEAM**

Once again this year, the focus of the KLA Lake Management Team is AIS prevention. By the end of the 2022 boating season, DNR trained inspectors will have spent 1100 hours at the public landing checking boats and trailers for potential invaders. The inspectors are hired by Hubbard County and paid with funds from the State of Minnesota, the Kabekona Lake Foundation and Lakeport Township.

During all hours, whether an inspector is present or not, the I-LIDs Camera system records all launch activity. The camera is installed and maintained by KLA volunteers. The videos are randomly viewed by employees of Environmental Sentry Systems. They alert us to any potential violations they detect. The I-LIDS also plays an audio recording during each launch or extraction reminding ramp users of proper AIS procedures.

During the summer months, Lake Management Team members conduct water quality testing and forward their findings to the Pollution Control Agency and the DNR. Those tests include, Secchi Disk readings for clarity, dissolved oxygen levels and sampling the water column for Zebra Mussel Veligers. Also, there are approximately 20 docks around the lake where volunteers have place zebra mussel “traps” that can easily be inspected for signs of infestation. The traps are simply PVC pipes filled with concrete that hang in the water at the end of a dock.

The latest lake invader to encroach on area lakes is Starry Stonewort. It is currently threatening the wild rice beds on Steamboat Bay on Leech Lake, where a costly eradication process is underway. KLA members are urged to learn how to identify Starry Stonewort and other forms of AIS to help us keep as many eyes on the lake as possible. Contact a member of the Lake Management Team for resources.

Property owners with private launch facilities are urged to treat their ramps with the same vigilance as the public ramp when it comes to launching their own boats or those of guests who may have boated on another lake.

In 2021 many KLA members who enjoy fishing may have been approached a DNR employee conducting a creel survey on our lake. That report is not yet final, however, it will be posted on the KLA website when available. The report is not exclusively about fishing as it documents observations of all types of boating activity and time spent on the lake.

### **Members of the Lake Management Committee:**

Sam Holmgren, Chair

Ingrid Bey

Tim Werner

Luther Nervig

Rolf Smeby

David Loch

Mike Dudley

Submitted by Sam Holmgren, Chair

# **HUBBARD COUNTY** **COALITION OF LAKE ASSOCIATIONS** **(HC COLA)**

Hubbard County Coalition of Lake Associations (HC COLA) is the county leader in protecting Hubbard County's lakes and rivers. Their mission is to protect and enhance the quality of our lakes and rivers, preserve the economic, recreational and natural environmental values of our shorelands and promote the responsible use of our waters and related habitats. Hubbard County COLA's mission is to enhance, promote and protect the interests of lakeshore property owners, lake associations, local government, the general public and future generations.

Hubbard County COLA was formed in 1988. HC COLA now has **31 lake associations** representing **43 lakes** with over 2660 members.

Meetings are held once a month from April to October. The meetings are a combination of live in person meetings in Park Rapids and ZOOM meetings. The meetings start with 1 or 2 guest speakers at 6:30PM. The business meeting of HC COLA is at 7:30PM. The meeting is usually done by 8PM. Anybody from a Hubbard County Lake Association may come to the meetings.

Kabekona Lake, in conjunction with RMB Environmental Laboratories of Detroit Lakes, MN does 5 tests for phosphorus and chlorophyll A in the lake during the summer. They also do 2 tests (one in June and one in July) looking for Zebra Mussel young (called veligers) and Spiny Water Flea. Hubbard County and Kabekona Lake have paid boat inspectors at the boat landing. There are 15,878 county funded inspection hours covering 35 sites in Hubbard County

HC COLA and the KLA are excellent partners. HC COLA is an important information source for connecting our lake with various programs that protect and enhance our lake. Visit the HC COLA information table (among others) at the annual meeting to learn more about Shoreland Advisors (an HC COLA program), Get the Lead Out (a MN Pollution Control Agency - MPCA program), MN Loon Restoration (a Minnesota DNR program), and Starry Trek (a state of Minnesota program).

Submitted by: Rolf Smeby

## **SEPTIC SYSTEMS**

The Septic Program began in 2005 and has been funded by grants from the Kabekona Lake Foundation. The purpose of the program is to encourage the cleaning of septic systems to maintain water quality of the lake. It provides a rebate every three years of \$60 upon receipt of a septic cleaning receipt for KLA member lake residents and \$30 for non-member lake residents. The initial charter for this initiative confirms that the rebate is only available for septic systems that belong to properties on Kabekona Lake. It does not apply to KLA members who own property elsewhere. Review of the last 10 years shows that there has been an average of 33 rebates each year.

Mary Moffatt chaired the program until the past year. Heidi Soneson and Kathy Brown assumed the role on April 1, 2022. From July 1, 2021 through March 31, 2022, 41 rebates were paid. The balance as of March 31, 2022 was \$4716.15 after a grant of \$6000 from KLF during that time period.

As of June 30, 2022, the balance is \$4597.12 with earned interest of \$.97 and 2 rebates paid totaling \$120 since April 1, 2022. 2 additional rebate checks have been issued since the most recent bank statement.

Submitted by Kathy Brown & Heidi Soneson, Septic System Coordinators

## **Social Groups**

For the purpose of this report, our KLA social group events are roughly divided into 2 categories. \*One group includes those events which are coordinated by KLA volunteers for all KLA members. \*\*A second social group category includes those events which also include a few other local residents. This second type of social group may be held in an off-lakeside location and/or may be coordinated by a non KLA member. Both of these types of groups are open to all KLA members.

\*KLA member social groups might be very large, medium-sized or even small in attendance. The largest gatherings are the KLA Picnic and KLA Annual Meeting. Generally, around 100 members attend these larger meetings. They are held at the Laporte School and are organized by a number of KLA member volunteers, who work together to successfully pull off these gatherings. Other KLA social get togethers are different sizes, depending on the season. These include: KLA Coffees, KLA Women's Lunches, KLA Men's Breakfasts, KLA Ice-Out contest celebration and more. These gatherings are largely coordinated by past KLA President, Martha Vetter. The KLA is very grateful for her long time dedication to the KLA community in several important capacities.

\*\*Social gatherings which are attended mostly by KLA members include Knitters/Crafters and Book Club. There will be an article in the fall KLA Newsletter on the curling team, which also fits this category. Although this last group was organized for a recreational purpose, they also enjoy spending social time together during the winter months. KLA members are also very welcome at these events.

There have been additional KLA member social groups in the past. If a volunteer steps forward to coordinate them or if new groups are formed, the list of KLA social events will grow in number.

For more information on any of these groups, to suggest other group possibilities or to volunteer, please consult the KLA website ([kabekonalake.org](http://kabekonalake.org)), contact any KLA board member or connect with [kla56461@gmail.com](mailto:kla56461@gmail.com).

## **ARCHIVES**

The KLA has 2 filing cabinets which house our archives at the Laporte School. One cabinet contains KLA and Kabekona Lake history. The other cabinet focuses on the Kabekona Lake Foundation (KLF). Both are open to members visiting them upon request. Contact the KLA secretary if you are interested in visiting them.

- The KLA Archives contain a lot of information on Kabekona Lake from its very early history to the present. The predecessor organization of the KLA (Friendship Springs) is also featured. All the past board meeting, newsletters, annual meeting reports etc. are stored there.
- The KLF Archives contain information on the beginnings of our KLF organization, as well as recent information and projects which it has taken on through the years.

Here is a tidbit of archival information from Kabekona's past:

An undated map of Kabekona lists a number of resorts on the lake. It is surprising how many member resorts existed at the time of the map. At least 2 familiar names are missing from it though, specifically Benedict Resort on Sunset Bay and Cry of the Loon Lodge on the north shore.

Submitted by: Stef Westphal



# **KLA WEBSITE**

Since launching the new Kabekona Lake website ([kabekonalake.org](http://kabekonalake.org)), it has seen a lot of traffic. Here are the analytics since the website was launched in February 2022.

## Total visits to specific pages:

- Homepage: 1,964
- KLA Events: 329
- Photo Gallery: 268
- Membership Dues: 235
- Fishing: 190
- Kabekona Lake Association: 188
- RSVP to Picnic: 121
- Kabekona Lake Foundation: 118
- Area Events: 114
- Want Ads: 105
- Membership Form: 87
- Invasive Species: 54
- Lake History: 54
- Septic Tank Pumping: 47
- KLA Board Meetings: 44
- Monthly Climate Info: 41
- Property Tax Info: 24
- Location: 21
- Local & State Links: 19
- Aquatic Veg Survey: 18
- Bird Feeders and Avian Flu: 11
- KLA Mission & Membership: 6

Number of Giving Units who paid KLA dues through the website: 47

Number of Giving Units who paid for one year: 19

Number of Giving Units who paid for two years: 28

Amount of money collected for dues online: \$1,875 + one gift of \$500

## Traffic:

was **very** high right after launching

was lower during February, March, and the first half of April

has tripled and quadrupled from the middle of April to present

Submitted by Paul Andress, Webmaster

# **KABEKONA LAKE FOUNDATION (KLF)**

## **PRESIDENT'S REPORT**

It has been a pleasure to become involved in our lake association as a KLF Board Member, and current chair of the Foundation. It's a great way to become better acquainted with neighbors around the lake.

We have a great Board – Darlene Hibbs, Catherine Holmgren, Margot Andress, Kimberly Matson, Tim Werner, Tom Jacobson, Mark Spaniol and Pete Fullerton. Thanks to all of you for contributions to the KLF. Special thanks to Tim Werner who has served as Treasurer.

The KLF has two funds that are managed through the St. Paul and Minnesota Foundation. The *Granting Fund* totaled \$72,416 as of April 30 of this year. This fund distributed more than \$17,000 to lake projects last year, including contributions to the Kabekona River Project, the AIS Inspection service at the public landing, and an aquatic vegetation survey.

The Perpetual Fund totaled \$168,197 as of April 30 and will have approximately \$13,000 available for granting this year. Memorials and designated gifts are placed in the Perpetual Fund. Investment income from this fund was used to pay approximately \$6,000 to Kabekona property owners who participated in the septic refund program. The Board is always looking for good projects to fund – please send any project ideas you have to a Board member.

The Board's focus for the coming year will be on reviewing our Bylaws, making plans for responding in the event an aquatic invasive species were found in the lake (we are all thankful none are currently present), and looking for other ways to continue protecting our cherished lake.

Thanks to all who have made financial contributions to the Foundation. We hope you consider making contributions again this year, and in the future.

Submitted by: Paul Rasmus, KLF President



# **KLA BOARD 2023 NOMINATIONS**

## **Sue Schiess**

Sue Schiess and husband Gary bought what was left of the old *Cry of the Loon* resort in 2013 and have been spending as much time at the lake as possible ever since. (They also live in Eden Prairie, MN.) Sue served on the Kabekona Lake Foundation board for six years, three of them as president. Sue is also an active Shoreland Advisor with Hubbard County Coalition of Lake Associations (HCCOLA).. She and Gary have four children and five grandchildren, all of whom enjoy visiting Kabekona.

## **KLA AND KLF BYLAWS**

The KLA and KLF Bylaws, which previously have been printed in the KLA Annual Reports are now available online on the KLA website ([kabekonalake.org](http://kabekonalake.org)). They are located under the “About” drop down menu. For the KLA Bylaws, check under “Kabekona Lake Association.” They are found after the list of board members. The KLF Bylaws are located under “Kabekona Lake Foundation.” They are found after the list of board members.

